



YOUR SOLID SURFACE SOLUTIONS

www.samsungstaron.eu

SAMSUNG CHEMICAL EUROPE GMBH

Am Kronberger Hang 6, Samsung Haus D-65824
Schwalbach/Ts., Germany
Tel: +49-6196-667-403, Fax: +49-6196-667-467
Free Hotline in Germany: 0800-1-782766

HEAD OFFICE

332-2 Gocheon-Dong Uiwang-Si,
Gyeonggi-Do, Korea, 437-711
Tel: +82-31-596-3833, Fax: +82-31-596-3881

PLANT

62, Pyungyeo-Dong, Yeosu City
Jeollanam-Do, Korea 555-210
Tel: +82-61-689-1581, Fax: +82-61-689-1584

Copyright ©2009 Cheil Industries Inc.
Staron® is a registered trademark

Printed in KOREA
02/09 v1

staron® | **tempest®**

www.samsungstaron.eu

Discover staron® | tempest®

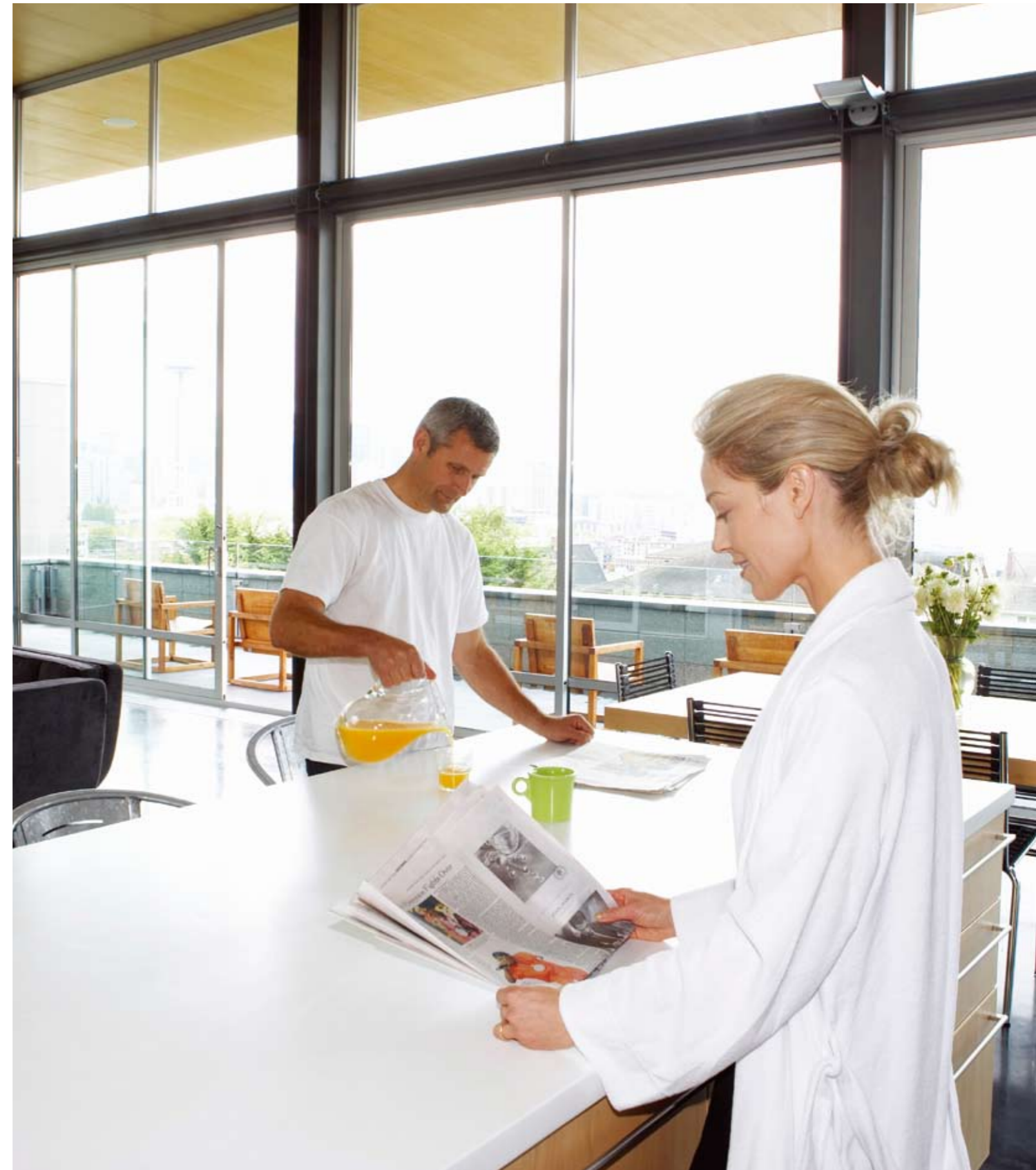
A vast world of colors and styles combined with worry-free
performance countertops and work surfaces.



8:00am

Fresh...

Staron / Tempest allows fresh, break through designs and helps you earn higher margins.





A Healthier Kitchen

Unlike tile or granite, Staron/Tempest is nonporous with inconspicuous seams. As a result, germs can't penetrate it or reside in grout seams. Even moisture cannot infiltrate and cause damage as it can with laminate countertops. And with colors covering the spectrum from light to dark, it's easy to maintain a healthy kitchen that works with any design.

Contrairement aux carreaux et au granit, le Staron/Tempest est un matériau non poreux dont les joints d'assemblage sont quasiment invisibles. Résultat : les germes ne peuvent y pénétrer ni s'accumuler dans les joints. L'humidité ne peut pas non plus s'infiltrer dans le matériau et l'endommager, comme cela est le cas avec les panneaux en stratifié. Et comme son nuancier couvre toute la gamme des teintes claires à foncées, il est très facile de concilier cuisine hygiénique et exigences esthétiques.

Im Gegensatz zu Marmor oder Granit hat Staron/Tempest weder Poren noch Fugen, in denen sich Bakterien festsetzen könnten. Selbst Feuchtigkeit hat keine Chance, in die Platte einzudringen und sie zu beschädigen. Und dank der breiten Palette von hellen bis dunklen Farben lassen sich Hygiene und Design spielend miteinander verbinden.







2:00pm

Complementary...

Staron / Tempest complements any design..
And earns your compliments, too.





Meets With Approval

In public areas, retail spaces and other commercial locations, Staron/Tempest stands up to daily wear and tear. But Staron/Tempest has uses that go far beyond reception areas and information desks. Because it is a nonporous, hygienic surface, Staron/Tempest is approved for use in commercial food preparation areas, health care and even laboratory use by all agencies that regulate specifications in those industries.

Utilisé dans les espaces publics, la distribution et dans d'autres lieux à vocation commerciale, le Staron/Tempest subit sans broncher les contraintes du quotidien. Son emploi ne se limite d'ailleurs pas aux réceptions et aux comptoirs d'accueil. Du fait de sa surface non poreuse et hygiénique, le Staron/Tempest est agréé pour l'usage dans les espaces commerciaux, la restauration, les locaux médicaux et même en laboratoires. Des agréments décernés à l'unanimité par toutes les agences chargées de définir les normes à appliquer dans ces secteurs.

In öffentlichen Einrichtungen, Geschäften und an sonstigen gewerblichen Orten hält Staron/Tempest spielend der täglichen Beanspruchung stand. Seine Verwendungsmöglichkeiten gehen jedoch weit über Empfangs- und Informationstresen hinaus. So ist Staron/Tempest, dank seiner porenlosen hygienischen Oberfläche auch von allen zuständigen Behörden für das Gaststättengewerbe, Gesundheitseinrichtungen und sogar Labors zugelassen.



7:00pm

Conversation Starter

The eye-opening looking Solid Surface material available more than 100 colors.



Refined Elegance and Great Resistance

Staron/Tempest's durability is so outstanding, it is frequently used in commercial surfaces and transaction areas that face daily wear and tear.

La remarquable solidité et durabilité de Staron/Tempest sont appréciées pour des applications dans le domaine commercial soumis aux contraintes quotidiennes.

Die Strapazierfähigkeit von Staron/Tempest ist außerordentlich, somit ist der Einsatz in gewerblichen Bereichen, die der täglichen Nutzung unterliegen, kein Problem.







11:00pm

You'll get hooked...

With a full line of sinks and bowls, Staron / Tempest can complement any residential or commercial project.



A Fully Integral Bathroom

Staron/Tempest and its seams, which are glued and buffed, are impervious to moisture. Ideal throughout a bathroom. Staron/Tempest is used for vanities and sinks, shower walls, tub decks, tub backsplashes and even window sills. Its resistance to make-up stains and water spotting makes cleanup easy.

Le Staron/Tempest et ses joints collés et polis sont imperméables à l'humidité. Idéal en tout endroit de la salle de bains, il est utilisé pour les coiffeuses, les vasques, les cloisons de douche, les entourages et les dossierets de baignoires et même pour les appuis de fenêtre. Résistant aux taches de maquillage et d'eau, il est très facile à nettoyer.

Staron/Tempest Platten und Formteile sowie deren Kanten sind poliert und hermetisch gegen Feuchtigkeit abgedichtet. Staron/Tempest ist folglich die ideale Lösung für Waschbecken, Ablagen, Dusche, Badewanne, Wandverkleidung und sogar für Fensterbänke, da Feuchtigkeit einfach keine Chance hat. Staron/Tempest ist fleckenbeständig und lässt sich mühelos reinigen.





Weekend

Roadside Attraction

Staron / Tempest offers a standard of luxury that rivals fine hotels.
Staron / Tempest also offers the durability and easy maintenance needed
by people on the go.



Colors of staron®

Solid

<i>New</i> 					
Pure White SP 016	Bright White BW 010	Pearl SP 011	Natural SV 041	Ivory SI 040	Tusk ST 015
		<i>New</i> 			
Celadon SC 010	Fog SF 020	Cumulus SC 015	Offwhite SO 021	Sunflower SS 042	California Poppy *SC 052
					<i>New</i> 
Geranium *SG 054	Univers *SU 053	Green Tea *SG 065	Skylight *SI 071	Mountain Bluebird *SM 075	Purple Heart SP 073
		<i>New</i> 			
Steel *ST 023	Walnut *SW 055	Iris SI 056	Onyx *ON 095		

***Dark Colors**

Dark colors of Staron are more delicate for scratches and haziness than lighter colors and need more intensive care.

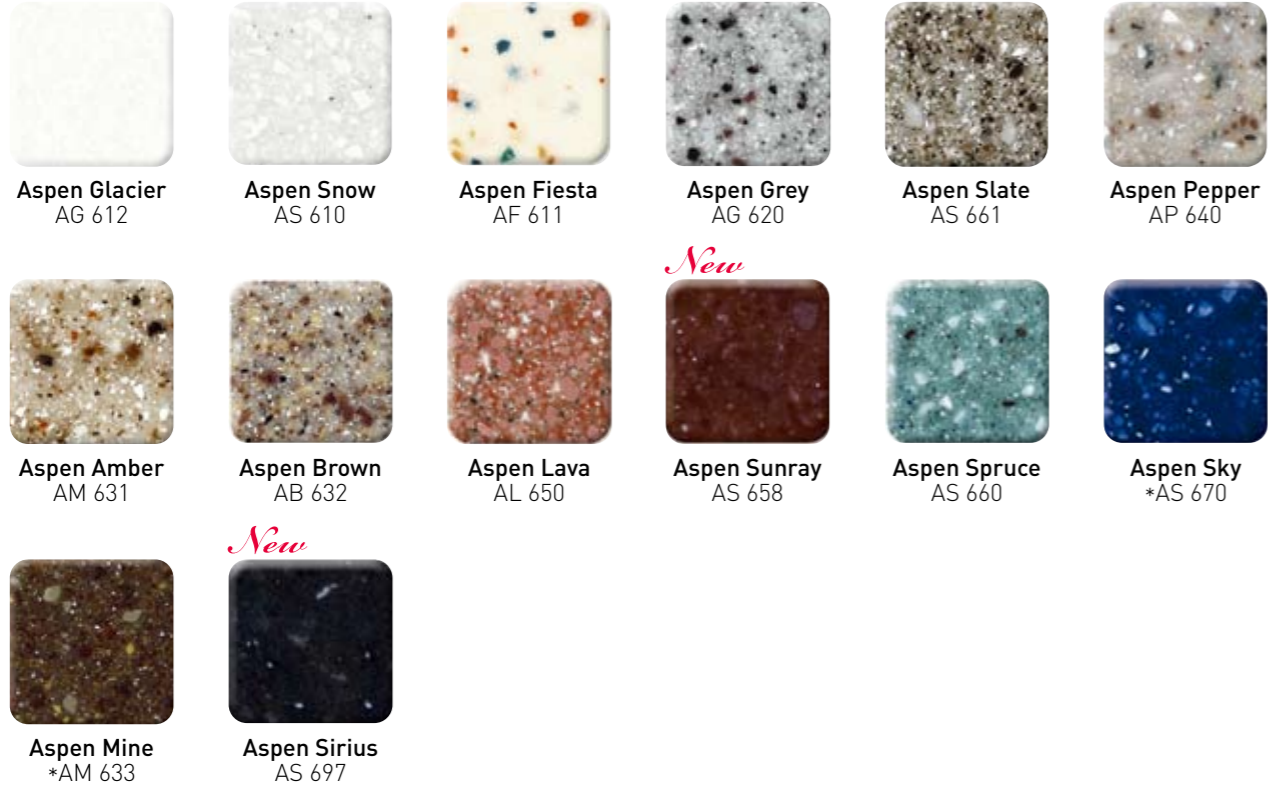
Sanded

					
Sanded Icicle SI 414	Sanded Birch SB 412	Sanded Cream SM 421	Sanded White Pepper WP 410	Sanded Sahara SS 440	Sanded Gold Dust SG 441
	<i>New</i> 				
Sanded Vermillion SV 430	Sanded Oatmeal SO 446	Sanded Kiwi SK 432	Sanded Seafoam SS 471	Sanded Cornmeal SC 433	Sanded Stratus SS 418
		<i>New</i> 			
Sanded Grey SG 420	Sanded Mocha SM 453	Sanded Chestnut SC 457	Sanded Pine SP 462	Sanded Dark Nebula DN 421	Sanded Onyx *SO 423
					
Sanded Nightsky *SN 424					

Printed representation of colors may vary from actual samples: Please view actual sample prior to selection.



Aspen

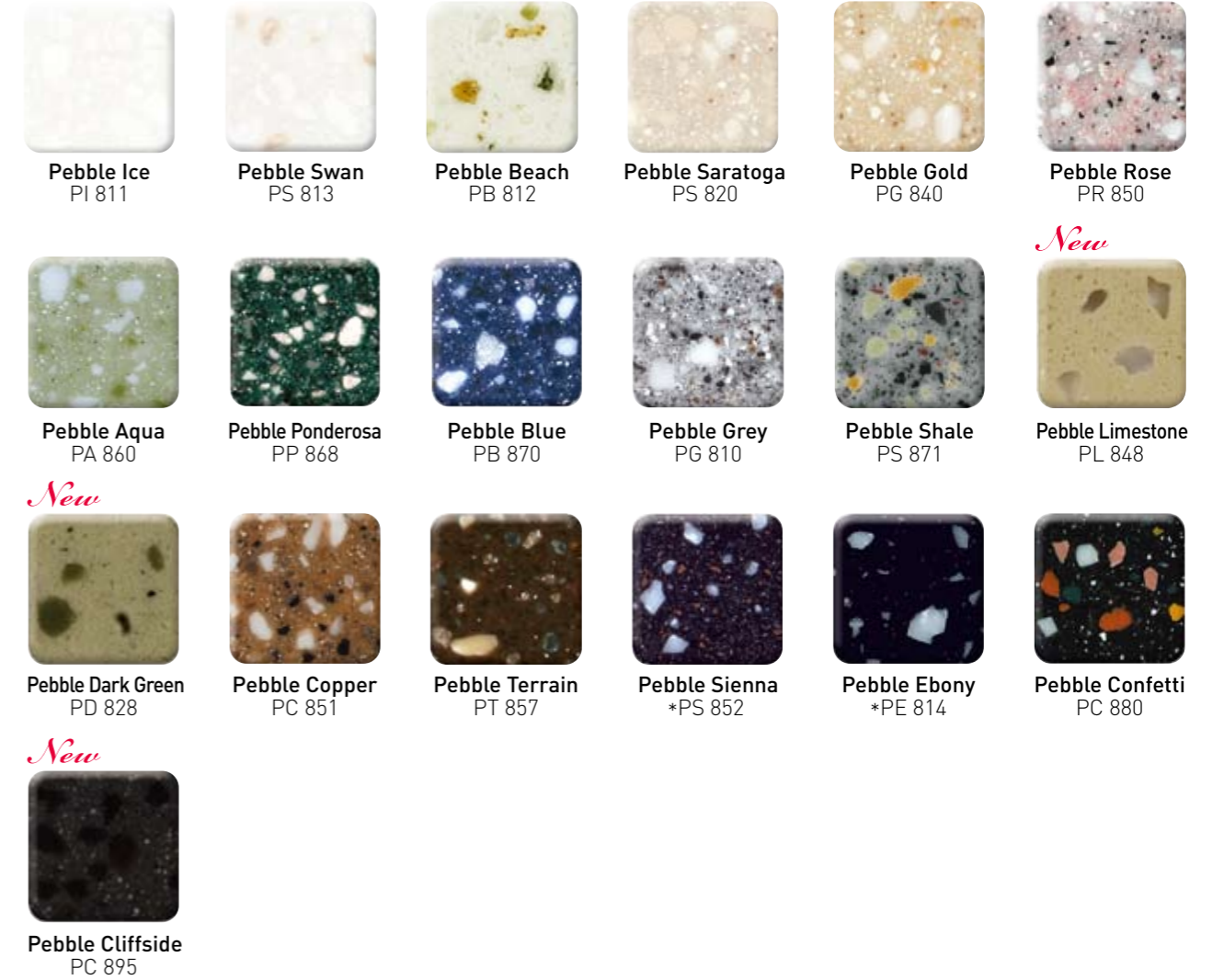


*Dark Colors

Dark colors of Staron are more delicate for scratches and haziness than lighter colors and need more intensive care.



Pebble



Talus



Metallic



Printed representation of colors may vary from actual samples. Please view actual sample prior to selection.

Colors of tempest®

New



Meteor
FM 111

New



Pinnacle
FP 112

New



Brilliance
FB 117

New



Rime
FR 118

New



Twilight
FT 113



Shell
FS 115



Rattan
FR 124



Shallot
FS 157

New



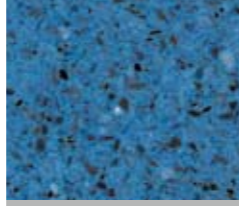
Allspice
FA 152

New



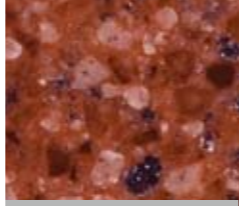
Spearmint
FS164

New



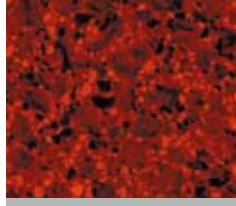
Sapphire
FS 175

New



Brick
FB 134

New



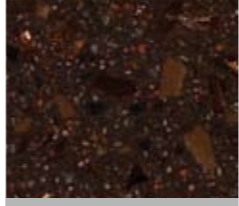
Paprika
*FP 136



Spice
*FS 137



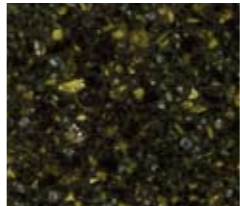
Coffe Bean
*FC 158



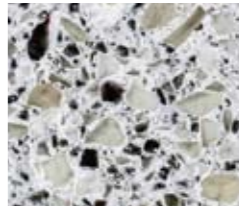
Blaze
*FB 147



Shimmer(Radiance)
*FR 148



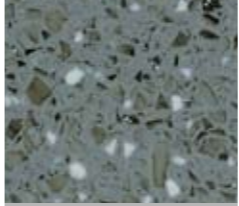
Gold leaf
FG 196



Sierra
FS 123



Dapple
FD 187



Stratus
FS 186



Zenith
FZ 184



Tektite
*FT 188



Starfire
*FS 198



Constellation
*FC 197

***Dark Colors**

Dark colors of Tempest are more delicate for scratches and haziness than lighter colors and need more intensive care.



Printed representation of colors may vary from actual samples. Please view actual sample prior to selection.

SINK & BOWLS

STARON®/ TEMPEST® NOW OFFERS A COMPLETE LINE OF SINKS & BOWLS FOR KITCHEN AND BATH.

Available in three neutral shades, Staron/Tempest sinks and bowls complement the entire range of Staron/Tempest countertop colors. Because the sink and countertop appear as one continuous surface, there's nowhere for germs, mold and dirt to build up.

STARON®/ TEMPEST® VOUS PROPOSE MAINTENANT UNE LIGNE COMPLÈTE DEVIERS ET DE LAVABOS POUR CUISINE ET SALLE DE BAINS.

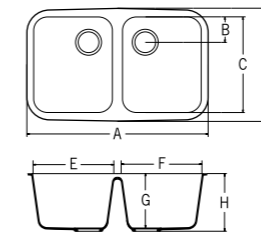
Disponible en trois teintes neutres, les évier et lavabos Staron/Tempest complètent toutes les gammes de coloris de plans de travail Staron/Tempest. Les évier et plans de travail se fondent en une seule surface, germes, moisissures et saletés ne peuvent s'y accumuler.

STARON®/ TEMPEST® BIETET JETZT AUCH EINE KOMPLETTE LINIE VON SPÜL-UND WASCHBECKEN FÜR KÜCHE UND BAD AN.

Die Staron/Tempest Spül- und Waschbecken sind in drei neutralen Farbtönen erhältlich, die sich der gesamten Staron/Tempest-Farbpalette für Arbeitsplatten anpassen. Platten und Becken sind porenlos und werden durch nahezu unsichtbare Fugen homogen miteinander verbunden, dass Schmutz und Bakterien keine Chance haben, sich fest zu setzen.

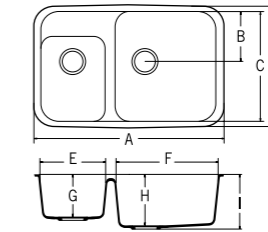
FOR THE KITCHEN

A2311



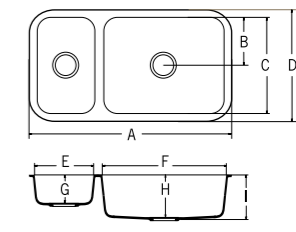
A	31-1/4" [794mm]
B	4-15/16" [110mm]
C	16-9/16" [421mm]
D	18-15/16" [481mm]
E	13-11/16" [348mm]
F	13-11/16" [348mm]
G	9-1/4" [235mm]
H	9-13/16" [250mm]

A2321



A	32-13/16" [834mm]
B	8-13/16" [244mm]
C	19-1/4" [488mm]
D	21-9/16" [548mm]
E	11-5/16" [287mm]
F	17-9/16" [446mm]
G	7-1/2" [191mm]
H	9" [229mm]
I	9-5/8" [244mm]

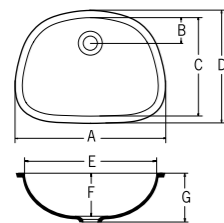
A2341



A	34-7/8" [886mm]
B	8-3/8" [213mm]
C	16-3/4" [426mm]
D	19-1/8" [486mm]
E	11-5/16" [287mm]
F	21" [533mm]
G	5" [127mm]
H	7-1/2" [191mm]
I	8-1/16" [206mm]

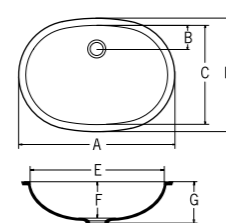
FOR THE BATH

A3201



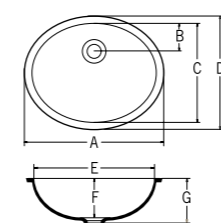
A	20-3/8" [517mm]
B	3-3/8" [86mm]
C	13-5/8" [346mm]
D	15-3/16" [386mm]
E	18-13/16" [477mm]
F	5-1/2" [140mm]
G	6-3/16" [157mm]

A3211



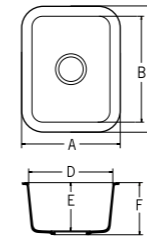
A	21-9/16" [548mm]
B	2-5/8" [66mm]
C	14" [356mm]
D	15-9/16" [396mm]
E	20" [508mm]
F	6-1/8" [156mm]
G	6-13/16" [173mm]

A3181



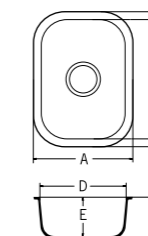
A	18-3/16" [462mm]
B	3-11/16" [94mm]
C	13-1/4" [336mm]
D	14-13/16" [376mm]
E	16-5/8" [422mm]
F	5-1/2" [139mm]
G	6-1/8" [156mm]

A1121



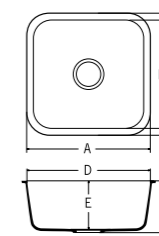
A	12-13/16" [326mm]
B	14" [356mm]
C	16-3/8" [416mm]
D	10-3/8" [266mm]
E	6-1/2" [165mm]
F	7-1/16" [180mm]

A1131



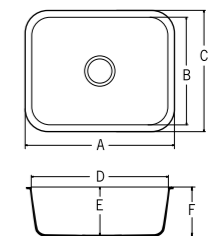
A	13-7/16" [341mm]
B	15-3/4" [400mm]
C	18-1/8" [460mm]
D	11-1/16" [281mm]
E	5-1/4" [133mm]
F	5-7/8" [148mm]

A1181



A	18-1/8" [460mm]
B	15-3/4" [400mm]
C	18-1/8" [460mm]
D	15-3/4" [400mm]
E	8-3/16" [208mm]
F	8-7/8" [225mm]

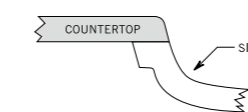
A1231



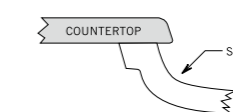
A	23-5/16" [592mm]
B	16-5/8" [422mm]
C	19" [482mm]
D	20-15/16" [532mm]
E	7-3/8" [187mm]
F	7-15/16" [202mm]

MOUNTING OPTIONS

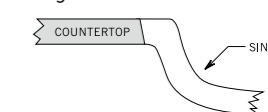
Seam mount



Under mount



Angled mount



PRODUCT SPECIFICATIONS

PATTERN	THICKNESS		WIDTH		LENGTH	
	mm	in	mm	in	mm	in
SOLID	6	1/4	760	30	2500	98
	12.3	1/2	760	30	3680	145
SANDED	6	1/4	760	30	2500	98
	12.3	1/2	760	30	3680	145
ASPEN	12.3	1/2	760	30	3680	145
PEBBLE	12.3	1/2	760	30	3680	145
QUARRY	12.3	1/2	760	30	3680	145
TALUS	12.3	1/2	760	30	3680	145
METALLIC	12.3	1/2	760	30	3680	145
TEMPEST	12.3	1/2	760	30	3680	145

THE STARON®/ TEMPEST® TRANSFERABLE 10-YEAR HOMEOWNER WARRANTY

We're confident in the quality of Staron/Tempest solid surface products. To ensure your satisfaction, Samsung is proud to offer our 10-Year Limited Warranty for Homeowners. It's your assurance that your Staron/Tempest countertop will maintain its long-term value. Our warranty is also transferable, so you'll be able to pass it along when you sell your home. A 10-year limited commercial warranty is also available for non-residential applications.

STARON®/ TEMPEST® OFFRE UNE GARANTIE TRANSMISSIBLE DE 10 ANS AUX PARTICULIERS

Confiant dans la qualité des produits fabriqués en panneaux compacts Staron/Tempest et soucieux de votre satisfaction, Samsung a le plaisir de vous offrir une garantie de 10 ans réservée aux particuliers. Ainsi, vous avez l'assurance que vos surfaces en Staron/Tempest conserveront leur valeur à long terme. Cette garantie est en outre transmissible, ce qui vous permettra d'en faire bénéficier le nouveau propriétaire si vous vendez votre maison. Une garantie commerciale de 10 ans est également disponible pour les applications professionnelles.

DIE ÜBERTRAGBARE STARON®/ TEMPEST®- ZEHNJAHRES GARANTIE FÜR HAUSEIGENTÜMER

Wir sind von der Qualität massiver Oberflächen aus Staron/Tempest so überzeugt, dass Samsung, Hauseigentümern eine zehnjährige Garantie anbietet. So können Sie sicher sein, dass Ihnen Ihre Arbeitsplatte aus Staron/Tempest lange Freude bereitet. Unsere Garantie ist im Übrigen auf den neuen Eigentümer übertragbar, wenn Sie Ihr Haus verkaufen. Bei kommerziellen Anwendungen gewähren wir ebenfalls eine zehnjährige Garantie.

DIN 4102-01
Building Material Class B1

